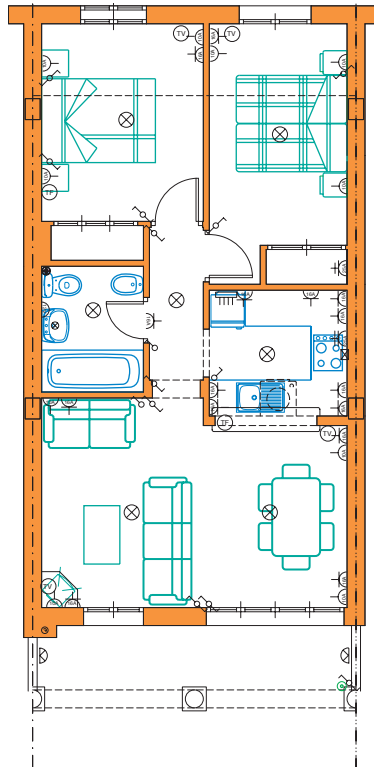


PLAYA

DOS DORMITORIOS APARTAMENTOS ~ TWO BEDROOM APARTMENT



Planta baja Ground floor

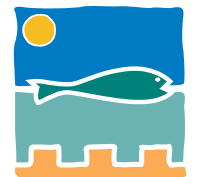
DIMENSIONES (máximas típicas)

APARTAMENTOS/ APARTMENTS

Salón comedor / Living dining room	5.10 x 3.50m
Cocina / Kitchen	2.30 x 2.10m
Dormitorio 1 / Bedroom 1	3.70 x 2.30m
Dormitorio 2 / Bedroom 2	3.30 x 2.70m
Baño / Bathroom	2.10 x 1.70m
Baño / Bathroom	2.10 x 1.70m
Vestiburo / Inner Hall	
Terraza / Terrace	

INSTALACION ELECTRICA ELECTRICAL INSTALLATION

C.G. Protección / Circuit breakers	☐
Punto de luz / Ceiling light point	⊗
Punto de luz / Wall light point	⊕
Luz halogena / Halogen light point	⊗
Interruptor / One way switch	⊕
Int. conmutado / Two way switch	⊕
Int. temporizador / Time switch	⊕
Enchufe 12 V / Socket	⊕
Enchufe 10 A / Socket	⊕
Enchufe 16 A / Socket	⊕
Enchufe 25 A / Socket	⊕
Empalme extractor / Extractor connection	⊕
Pulsador / Bell push	⊕
C de T.Teléfono / Telephone socket	⊕
C de T.Televisión y FM / Television FM socket	⊕
Portero automático / Entry phone	⊕



villaricos
FISHING VILLAGE
BETWEEN SEA & MOUNTAIN